



SKIOLD AKVAMAT

SKIOLD MAKES THE DIFFERENCE!

SKIOLD AKVAMAT is made from stainless steel, suitable for Weaners as well as Porkers. The mounting height is adjusted to suit the size of pigs in question as shown in the sketch above. SKIOLD AKVAMAT can serve up to 20 animals per trough.


ITEM	DESCRIPTION
140173000102	2 pcs. drinking cups to be fitted to the contact grid
140173000103	1 pcs. drinking cup to be fitted to the contact grid
140173000104	2 pcs. drinking cups to be fitted on 35mm plank
140173000105	1 pcs. drinking cup to be fitted on 35mm plank
140173000106	1 drinking cup for mounting against the wall
140771250230	Drinking cup sow, complete, pipe L=245mm (10 sets per box)
140771250231	Drinking cup sow, complete, pipe L=980mm

SKIOLD A/S • CVR: DK 57 08 1112 Steby • All Rights Reserved.
Data sheet: 140 986 023 277_05_08-10-2020.

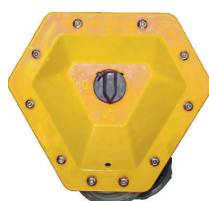


SKIOLDVMS

To establish the dispensed amount of water at various water pressures and valve adjustments, please refer to the table below (tolerances +/- 5%). The valves are pre-adjusted to 2 holes, but are easily adjusted by means of a screwdriver as shown - just tip off the filter, and you have easy access to the adjustment screw.

AMOUNT OF WATER (LITRES/MINUTE) - MAY VARY +/- 5%						
	Nozzle adjustment	Water pressure 0,2 bar	Water pressure 1 bar	Water pressure 2 bar	Water pressure 3 bar	Water pressure 4 bar
	1 hole	0.275 litres/minute	0.508 litres/minute	1.060 litres/minute	1.480 litres/minute	1.650 litres/minute
	2 holes	0.600 litres/minute	1.100 litres/minute	1.360 litres/minute	1.990 litres/minute	2.360 litres/minute
	3 holes	0.850 litres/minute	1.450 litres/minute	1.920 litres/minute	2.660 litres/minute	2.840 litres/minute
	4 holes	1.100 litres/minute	1.700 litres/minute	2.280 litres/minute	3.200 litres/minute	3.360 litres/minute
	5 holes	1.450 litres/minute	2.100 litres/minute	2.760 litres/minute	3.720 litres/minute	4.230 litres/minute

Aqua Flow water level valve



ITEM	DESCRIPTION
140771000100	Aqua Flow water level valve, without pipe
140179200820	Pipe, Stainless 1/2" thread, L=980mm

Reliable water supply with water level

MASTER FLOW is a diaphragm-operated valve system, which maintains a constant water level in the trough. The MASTER FLOW water level valve has two entrances with 1/2" female thread for horizontal and vertical water pipes. The water level valve is delivered with a plug in order to be able to close the entry not used.

For optimum use we recommend as follows:

- Water supply with a prefilter
- Water pressure of 2.0 - 2.5 bar/29-36 PSI
- The supply pipe - the vertical water pipe from the water level valve to the trough must be at least 80-220 cm
- The supply pipe is to be placed as far from the feed outlet as possible
- Regular cleaning of the supply pipe in order to avoid water contamination