



## NOZZLES FOR HIGH PRESSURE COOLING



SKIOLD MAKES THE DIFFERENCE!

### **NOZZLES FOR HIGH PRESSURE COOLING**

The nozzle system for high-pressure cooling is based on 12 mm stainless steel acid proof pipe with a wall thickness of 0.6 mm. By using stainless steel acid proof pipe there is security against fissure and tension corrosion in aggressive housing environments. The nozzle is resistant to impacts from ammonia vapours and has got an inside removable core (impeller) that makes it possible to clean the nozzles in case they close up or dry out because of chalk settlings etc.

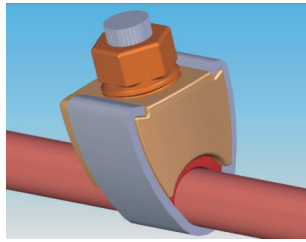
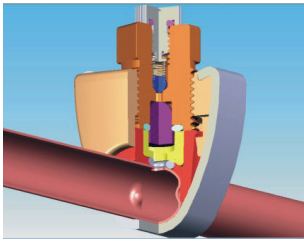


**SKIOLD**GROUP

# NOZZLES FOR HIGH PRESSURE COOLING

All nozzles have:

- O-rings and non-return valves made of EPDM rubber.
- Built-in filter that secures the nozzle point against impurities and settlings from the pipe system.
- Built-in anti-drip valve to prevent dripping nozzles.
- Stailness steel nozzle point.
- Big screw threads to minimize damage at over-tension most possible.



ITEM NO.	DESCRIPTION	CAPACITY AT 50 BAR	CAPACITY AT 70 BAR	PLEASE NOTE
140426600212	EC nozzle 0,2mm, V.2	3,4 litres/hour	4,1 litres/hour	Is used when there is no air stream to sustain the water fog. Normally the distance between the nozzles is not less than 120 cm.
140426600213	EC nozzle 0,3mm, V.2	5,0 litres/hour	6,2 litres/hour	Is used when a big capacity is needed and when there is an air stream to sustain the water fog. Normally the distance between the nozzles is not less than 120 cm.
140426600214	EC nozzle 0,4mm, V.2	6,5 litres/hour	8,2 litres/hour	Is used when a big capacity is needed and when there is an air stream to sustain the water fog. Normally the distance between the nozzles is not less than 120 cm.
140426600830	filter for nozzle			Spare part
140426600825	EC nozzle top 0,2 mm incl. filter	3,4 litres/hour	4,1 litres/hour	Spare part
140426600827	EC nozzle top 0,3 mm incl. filter	5,0 litres/hour	6,2 litres/hour	Spare part
140426600828	EC nozzle top 0,4 mm incl. filter	6,5 litres/hour	8,2 litres/hour	Spare part